

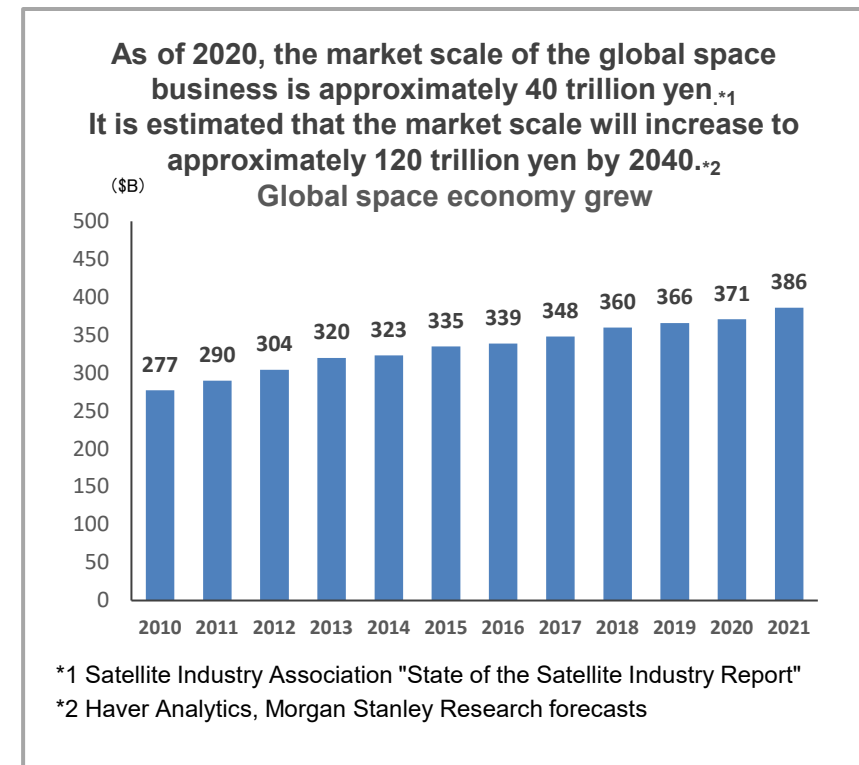
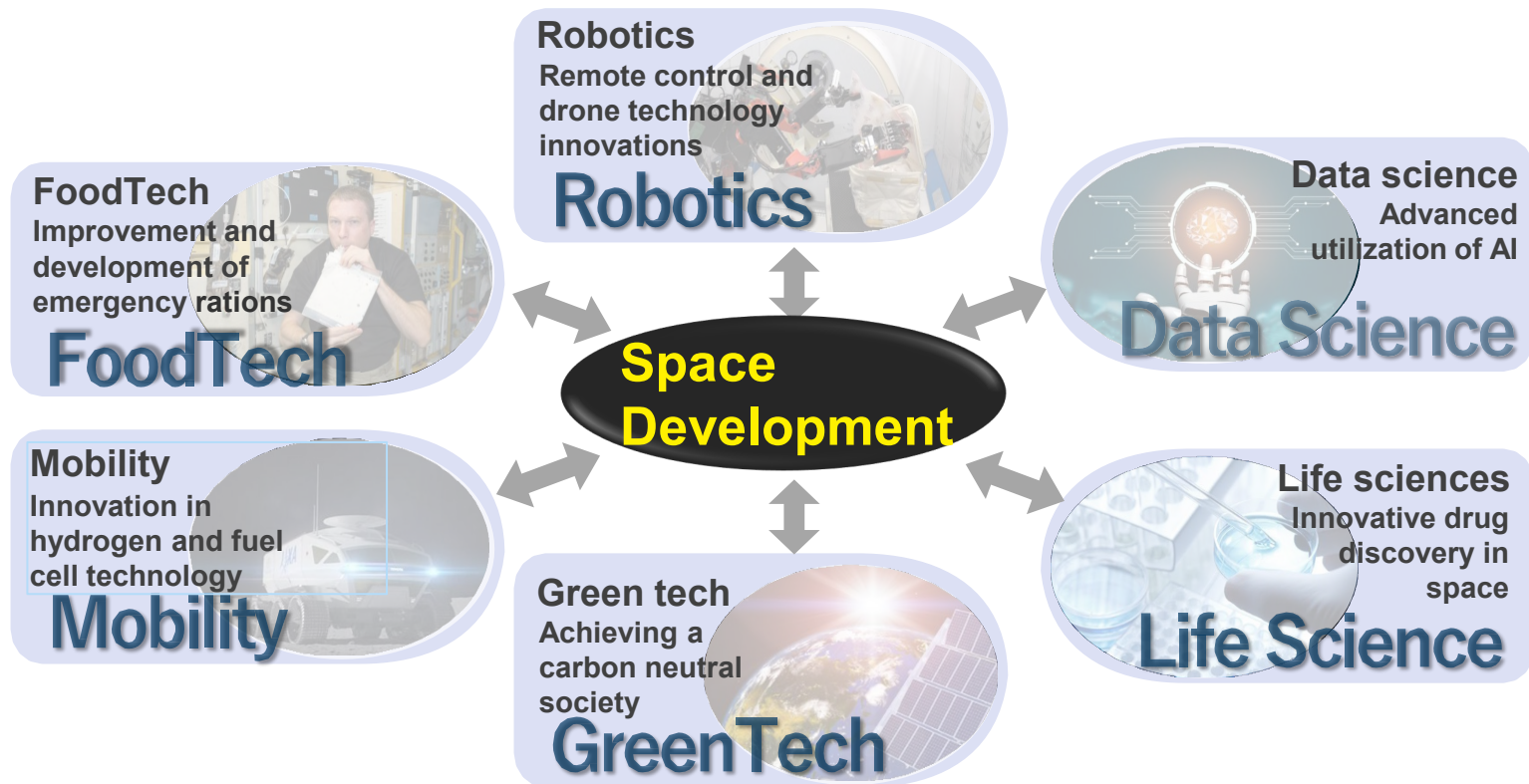


cross U

About the cross U Organization

Expansion of Space-Related Business

The advancement of space development has had an impact on innovating industries in a wide range of fields, and the fields and market size of space-related businesses continue to expand



Expanding technological development and operational efficiency in the main space business field

cross U's Objectives

We support the expansion of the space business by building an ecosystem with space-related players in Japan and overseas, industry, government, and academia, gathering the up-to-date knowledge and information

A look at our ecosystem and process for space-related business

Gather



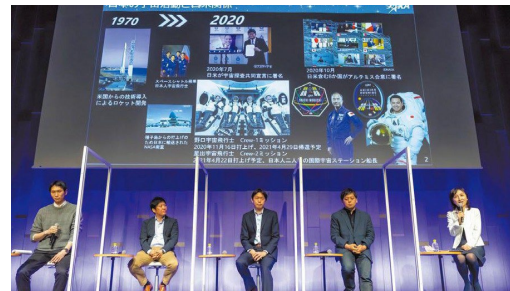
Companies, startups, and academia involved in the space business, gathering from Japan and overseas.



Connect



It also attracts players in related areas of the space business, and promotes a wide range of exchanges and spreading information.



Create



Accelerators, VCs, etc. will also come together, and various businesses will be born by integrating cutting-edge technology.



Expand



Innovation will accelerate and expand a variety of fields in the space-related business world.



Benefits of Participation

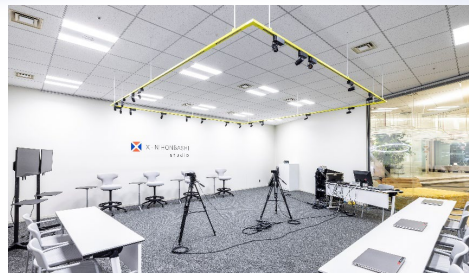
Providing places and opportunities to promote innovation in space-related businesses

Providing the place

We offer a variety of places to accelerate the space business



Co-working spaces

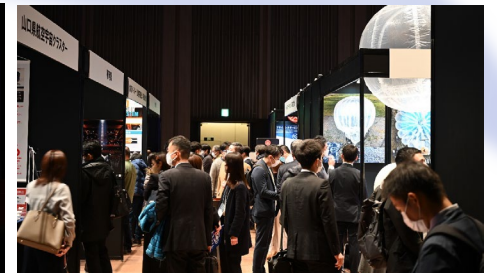


Studio



Creating opportunities

We offer business matchings, events, and other programs



NIHONBASHI SPACE WEEK (December 2022)

Various business services of the Mitsui Fudosan Group available to members in the Nihonbashi area

- Discounts and advanced reservations for halls and event spaces located in Nihonbashi
- Shared offices, lounges, fitness and other business services are available
- Discounts at Mitsui Fudosan Group hotels and resorts
- Catering service from COREDO Muromachi and restaurants in Nihonbashi
- Individual introduction to the Tokyo American Club
- Support such as urban implementations in collaboration with Mitsui Fudosan



Nihonbashi Mitsui Hall



WORK STYLING



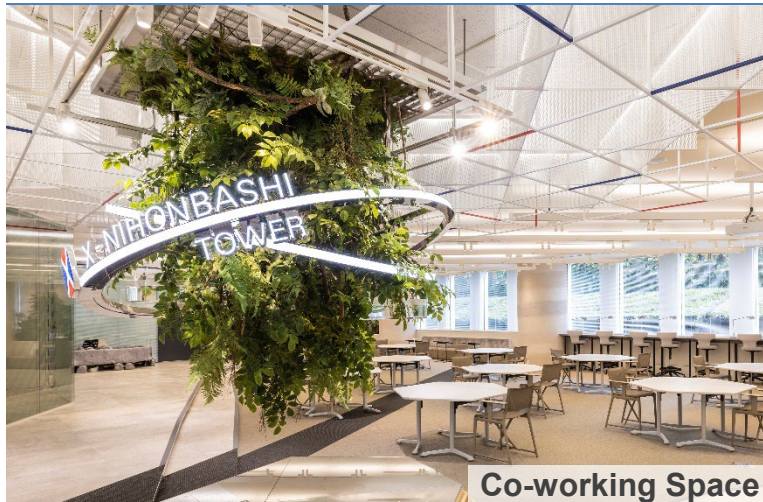
& BIZ fitness



& BIZ lounge

Benefits of Participation : Providing Places

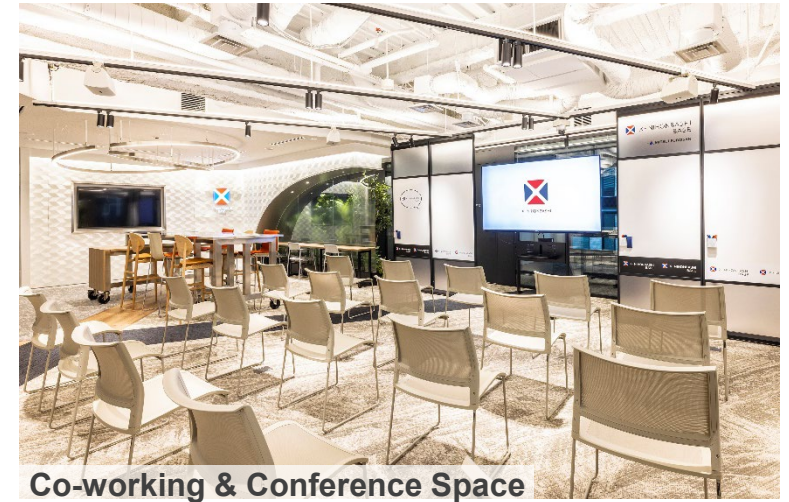
In addition to offices, we have a variety of spaces suitable for various business situations such as studios, project rooms, conferences, and a bar lounge



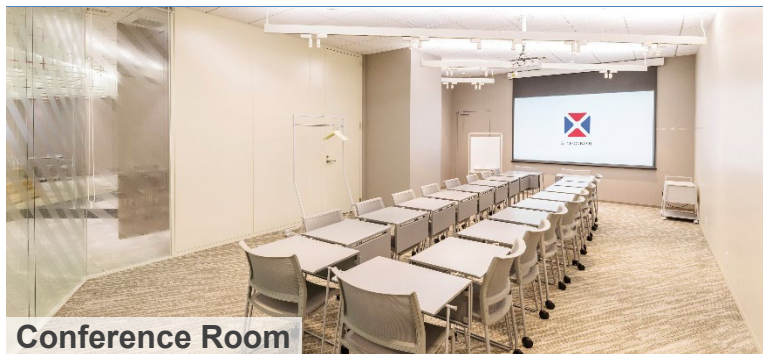
Co-working Space



Meeting Room



Co-working & Conference Space



Conference Room



Bar Lounge



Studio

Benefits of Participation: Creating Opportunities

Promoting the expansion of space-related businesses through a range of communication-oriented programs, including member gatherings and business matching events

Medium to large-scale events



Overseas market development



Creating innovation



Promoting industry exchange



Strengthening collaboration overseas

Media Collaborative Events



Events Organized by Supporters



Networking Events

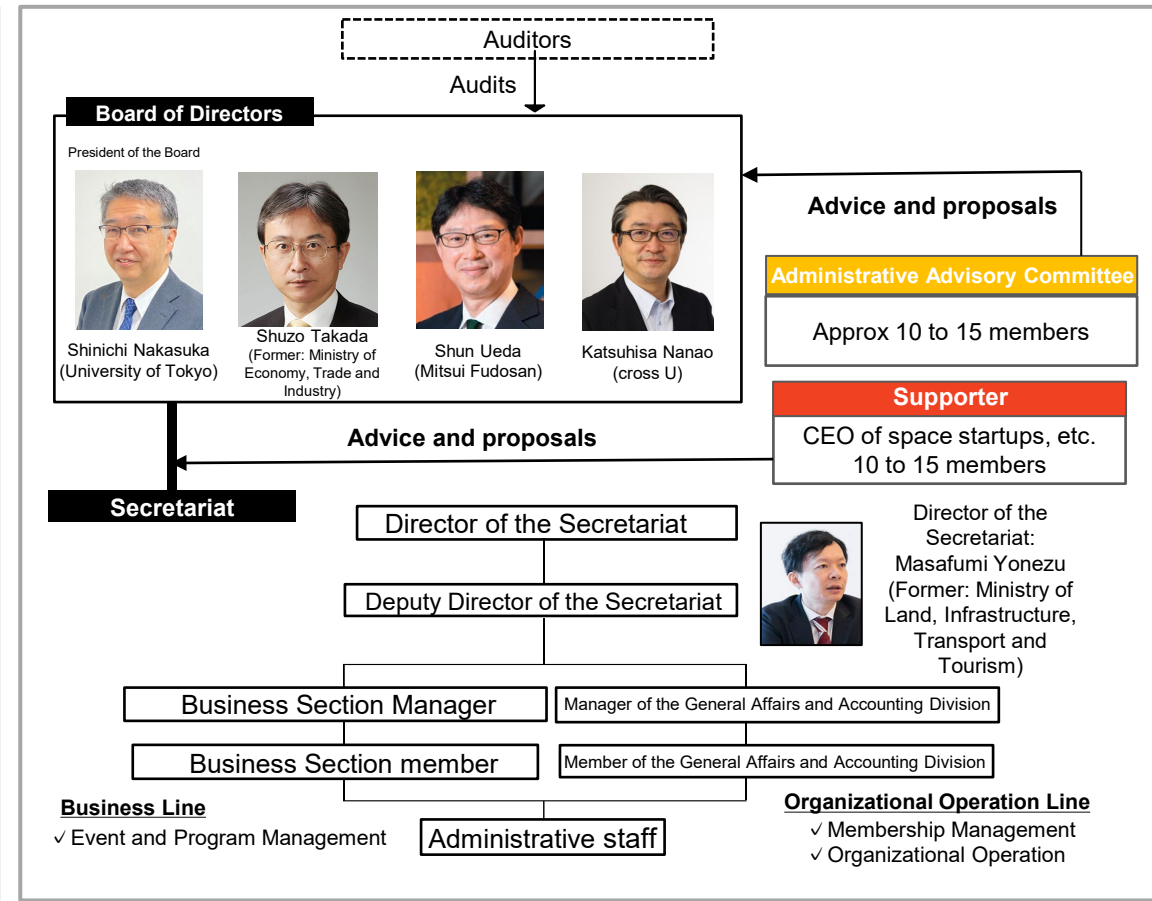


200 or more events are held annually
(Including sponsorship and co-sponsorship in FY2021)

Organizational Structure

We selected a wide range of talent from large companies, academia, and startups
 We established a support system to manage attractive events and programs

(1) Directors	Representative Director and Chairman	Shinichi Nakasuka	Professor at the Graduate School of Engineering, the University of Tokyo
	Vice Chairman	Shun Ueda	President and Representative Director of Mitsui Fudosan Co., Ltd.
	Director	Shuzo Takada	Former: Secretary-General of Space Development Strategy Promotion of Cabinet Office, Government of Japan Director-General, Manufacturing Industries Bureau, Ministry of Economy, Trade and Industry Current: Executive Officer of FUJIFILM Corporation A Senior Specially Appointed Professor at the Graduate School of Tokyo University of Science
(2) Auditors		Katsuhisa Nanao	General Manager, Nihonbashi Urban Planning and Development Department, Mitsui Fudosan Co., Ltd.
		Yutaro Kikuchi Shigeru Sugimoto	Director of Kikuchi Sogo Law Office Representative of Sakura & Co. Group
(3) Secretary General		Masafumi Yonezu	Former: Secretary to the Ministry of Land, Infrastructure, Transport and



- Business Line**
 - ✓ Event and Program Management
- Organizational Operation Line**
 - ✓ Membership Management
 - ✓ Organizational Operation

About Membership System

Covered		Admission fee	Annual membership fees	Bitkey The number of accounts issued (maximum)
Special Membership A	Companies constantly have 301 or more employees	50,000 yen	250,000 yen	10 *1 *3
Special Membership B	<ul style="list-style-type: none"> ■ Companies always have less than 301 employees ■ Non-profit organizations, etc. (Excluding Incorporated Administrative Agencies, National Research and Development Agencies, and Administrative organs (Local governments)) ■ Public organizations: such as National University Corporations, School Corporations, General Corporations, Public Interest Corporations, Social Welfare Corporations, and Diplomatic Missions in Japan. ■ Local governments 	20,000 yen	60,000 yen	5 *2 *3
Special Membership C	Individuals (limited to those who do not apply to Special member A and B)	2,000 yen	5,000 yen	1

*1 Up to 10 additional accounts can be issued for a fee

*2 Up to 5 additional accounts can be issued for a fee

*3 X-NT fixed-term tenants (not equal to members that have their business or office in Nihonbashi) have no limit on the number of accounts to be issued

About using facilities [Special Membership A and B]

X-NIHONBASHI TOWER Nihonbashi Mitsui Tower, 7F	Special Membership A and B	Also members in NIHONBASHI [Special case]
Tenant zones	X	Same as left
Use of co-working spaces	○	Same as left
Occupancy of co-working spaces	Reservations can be made up to 4 times a year , from 3 months in advance	Reservations can be made up to 12 times a year , from 6 months in advance
Meeting space 001 (with door) (★) Reservations are available from 2 weeks in advance / Reservation priority is given to the person who booked the co-working space	Free of charge up to 30 hours per month X-NIHONBASHI meeting space charges (★) and a total of 250 yen / 10 minutes after 30 hours	Free of charge up to 50 hours per month X-NIHONBASHI meeting space charges (★) and a total of 250 yen / 10 minutes after 30 hours
Meeting space 002 (without door, not available for reservation)	○	Same as left
Studio	Reservations can be made up to 4 times a year , from 3 months in advance	Reservations can be made up to 12 times a year , from 6 months in advance

X-NIHONBASHI Nihonbashi IT Building 3F and 4F	Special Membership A and B	Also members in NIHONBASHI [Special case] (Includes X-NT fixed-term tenants)
Use of co-working space and bar lounge	○	Same as left
Occupancy of co-working spaces Reservations cannot be made if the Bar Lounge is already booked	Reservations can be made up to 4 times a year , from 3 months in advance	Reservations can be made up to 12 times a year , from 6 months in advance
Bar Lounge occupancy Reservations cannot be made in general if already booked co-working space has already been booked	Reservations can be made up to 4 times a year , from 1 months in advance	Reservations can be made up to 12 times a year , from 2 months in advance
Meeting rooms (2 rooms) (★) Reservations can be made from 3 months in advance	Free of charge up to 30 hours per month X-NIHONBASHI TOWER meeting space 001 charges (★) and a total of 250 yen / 10 minutes after 30 hours	Free of charge up to 50 hours per month X-NIHONBASHI TOWER meeting space 001 charges (★) and a total of 250 yen / 10 minutes after 30 hours
Shared rooms (4 rooms)	A separate agreement with Mitsui Fudosan is required (membership required)	Same as left
PJ rooms (2 rooms (about 10 m ² and 17 m ²))	A separate agreement with Mitsui Fudosan is required (membership required)	Same as left
Exhibition space	Reservations can be made up to twice a year in two-week increments	Reservations can be made up to five times a year in two-week increments

About facility use [Special Membership C]

X-NIHONBASHI TOWER Nihonbashi Mitsui Tower, 7F	Special Membership C
Tenant zones	X
Use of co-working spaces	○
Occupancy of co-working spaces	X
Meeting space 001 (with door) (★) <small>Reservations are available from 2 weeks in advance / Reservation priority is given to the person who booked the co-working space</small>	Free of charge up to 30 hours per month X-NIHONBASHI meeting space charges (★) and a total of 250 yen / 10 minutes after 30 hours
Meeting space 002 (without door, not available for reservation)	○
Studio	X

X-NIHONBASHI Nihonbashi IT Building 3F and 4F	Special Membership C
Use of co-working space and bar lounge	○
Occupancy of co-working spaces <small>Reservations cannot be made if the Bar Lounge is already booked</small>	X
Bar Lounge occupancy <small>Reservations cannot be made in general if already booked co-working space has already been booked</small>	X
Meeting rooms (2 rooms) (★) <small>Reservations are available from 3 months in advance</small>	Free of charge up to 30 hours per month X-NIHONBASHI TOWER meeting space 001 charges (★) and a total of 250 yen / 10 minutes after 30 hours